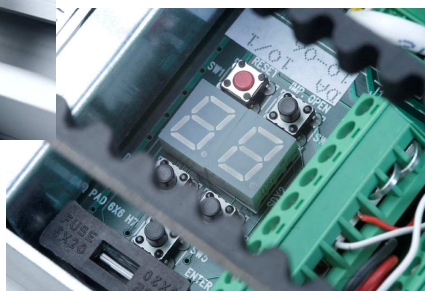


TECHNICAL INSTALLATION MANUAL

AUTOMATION FOR SLIDING DOORS

SPEED



WARNING!! Before installing, thoroughly read this manual that is an integral part of the pack

Our products if installed by qualified personnel capable to evaluate risks, comply with norms UNI EN 12453, EN 12445



The CE mark conforms to European directive
EEC 89/336 + 92/31 + 93/68 D.L. 04/12/1992 N. 476.

INDEX

	Pag.
GENERAL PROSPECTUS.....	2
TECHNICAL DATA.....	2
DIMENSIONS	3
ACCESSORIES HOUSING.....	3
INSTALLATION.....	4>7
ELECTRIC LOCK WITH MANUAL RELEASE.....	8
SUPPORT FOR GLASS WINGS.....	9
SAFETY PRECAUTIONS	11

GENERAL PROSPECTUS

The sliding door automations allow a fluid and silent movement.

The doors will arrest to the slightest obstacle and in the event of a power outage the door could be manual released.

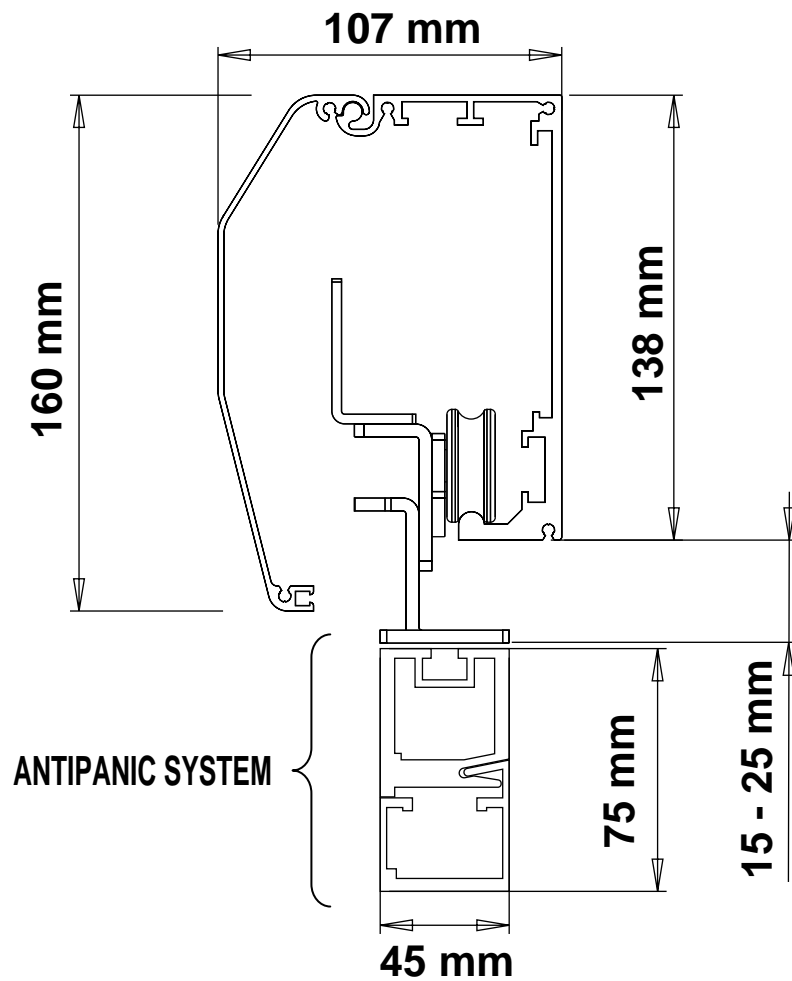
AUTOMATION PROSPECTUS

- Y Stamped and anodized aluminum structure
- Y Quick access to the equipment
- Y Belt drive with tensioning system.
- Y Galvanized steel trolleys with vertical manual adjustment and nylon wheels (lubrications not required)
- Y Control panel supply: 24 Vac with microprocessor
- Y Digital programming of operating parameters with permanent memory
- Y Motor speed control with PWM .
- Y Optical encoder input with test
- Y Maneuvers and alarms will be indicate in a segments display and by acoustic warning signals
- Y Operations counter and maintenance warning
- Y Emergency Automatic opening with backup battery (optional).
- Y Control with digital selector(optional)

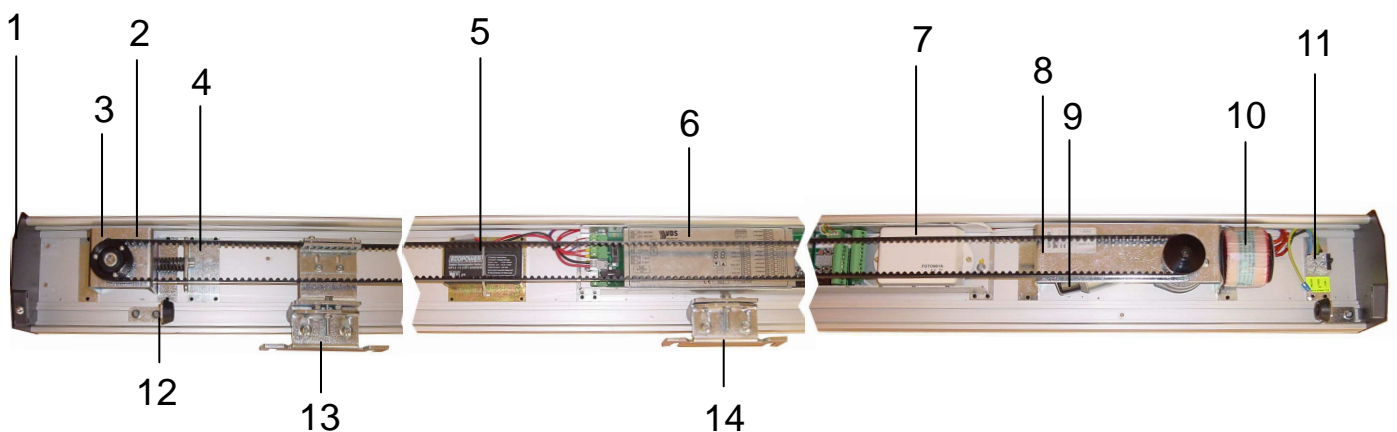
TECHNICAL DATA

Power supply	230Vac	Max weight 2 leaves	100+100 Kg
Rated frequency	50Hz	Protection rating	IP44
Nominal power	50W	Weight	4Kg/mt
Protection fuse	2A	Backup battery (optional)	12V 1.2 Ah
External accessories power supply	24Vdc	Noise level	<30dB
Max weight single leaf:	120 Kg	Working temperature	- 20\+55°C

DIMENSIONS



COMPONENTS HOUSING



- | | |
|--------------------------------------|---------------------------------|
| 1. Side caps | 8. Motor support with pinion |
| 2. Support driven pulley | 9. Motor optical encoder |
| 3. Electric lock with manual release | 10. Transformer |
| 4. Belt Tensioner | 11. Input Power supply terminal |
| 5. Back-up battery | 12. Mechanical limit switch |
| 6. Control unit | 13. Pulling cart |
| 7. Photocells amplifier | 14. Free cart |

CONSIDERATIONS FOR INSTALLATION

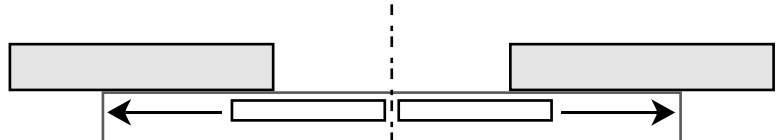
- ÿ The installation and testing operations must be performed solely by qualified personnel in order to guarantee the proper and safe operation of the sliding door.
 - ÿ The company declines any responsibility for damage caused by incorrect installations due to incompetence and/or negligence.
-

INSTALLATION

METHOD POSITIONING

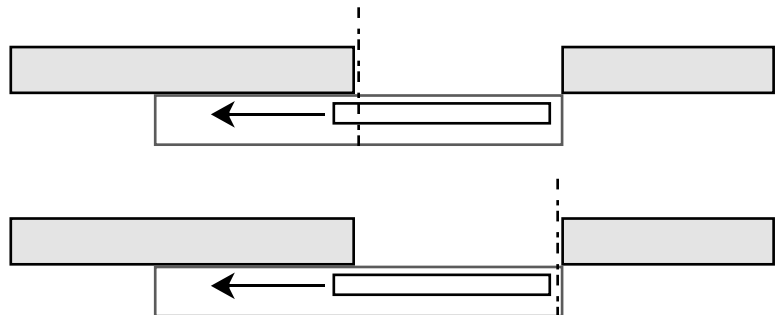
2 WINGS

The center of the profile should coincide with the center of the opening passage.



1 WING

The center of the profile should coincide with the end of the opening passage or the end of the profile should coincide with the end of the opening passage.



COVERALL FASTENING

Remove the cover. Drill holes on the front side of the coverall. it is recommended not to exceed a distance of 600 mm between the holes.



WARNING *Protect the electronic equipment before you drill the holes, and then wipe away any aluminum residues from the belt and the guide.*

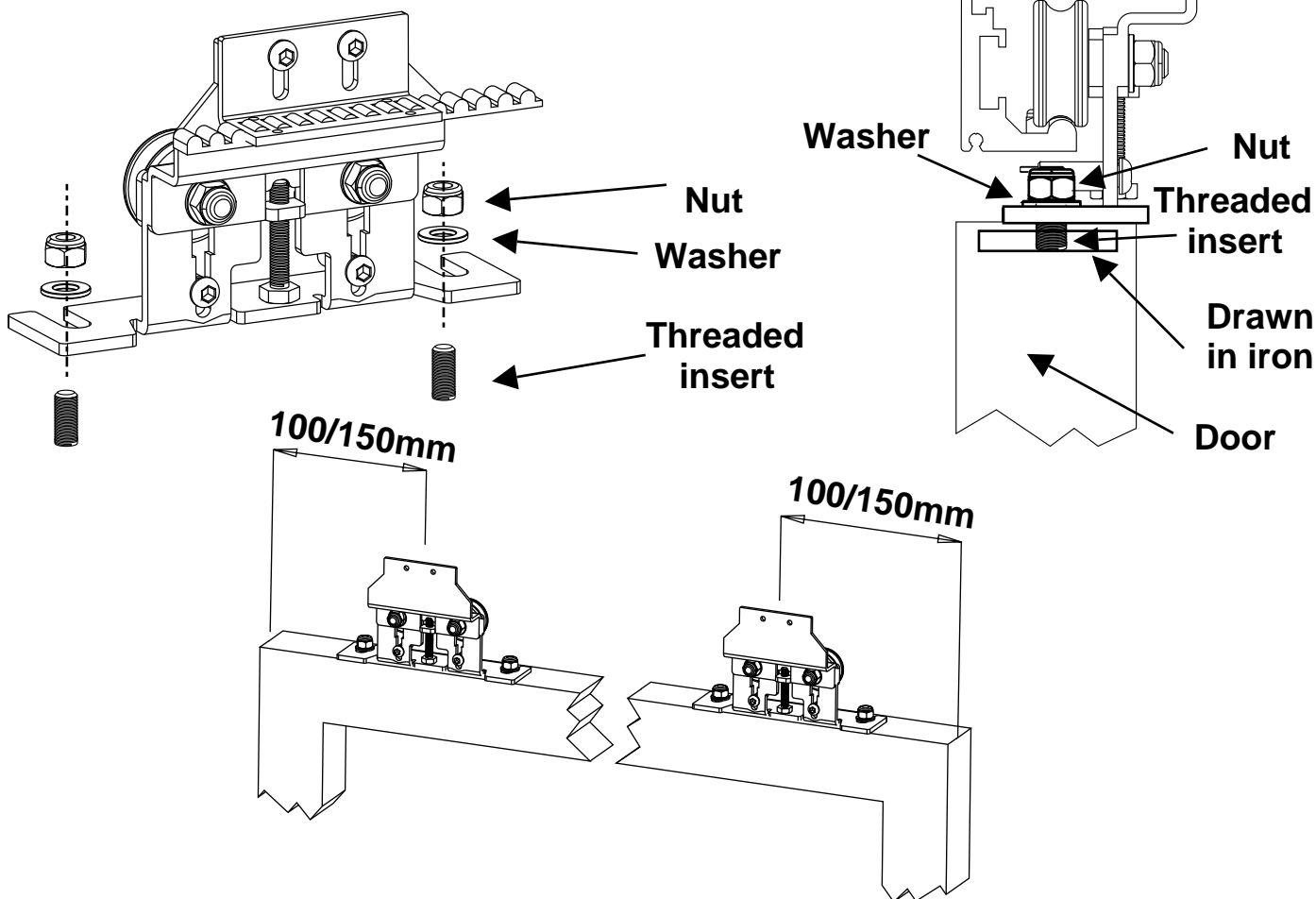
Calculate the measurements for the vertical dimension given by the height of the doors, considering the vertical distance of the carriages. (see coveralls dimensions)

Place the coverall parallel to the floor surface and mark the holes.

Provide holes for cable entry or open those pre-cutted. Fast the coverall to the wall using screws (minimum diameter of 5.)

LEAVES HOOKING

Place the leaf under the carts and securely fix by using 8/10mm threaded inserts (not provided) at a distance from the leaf ends of about 100/150mm.

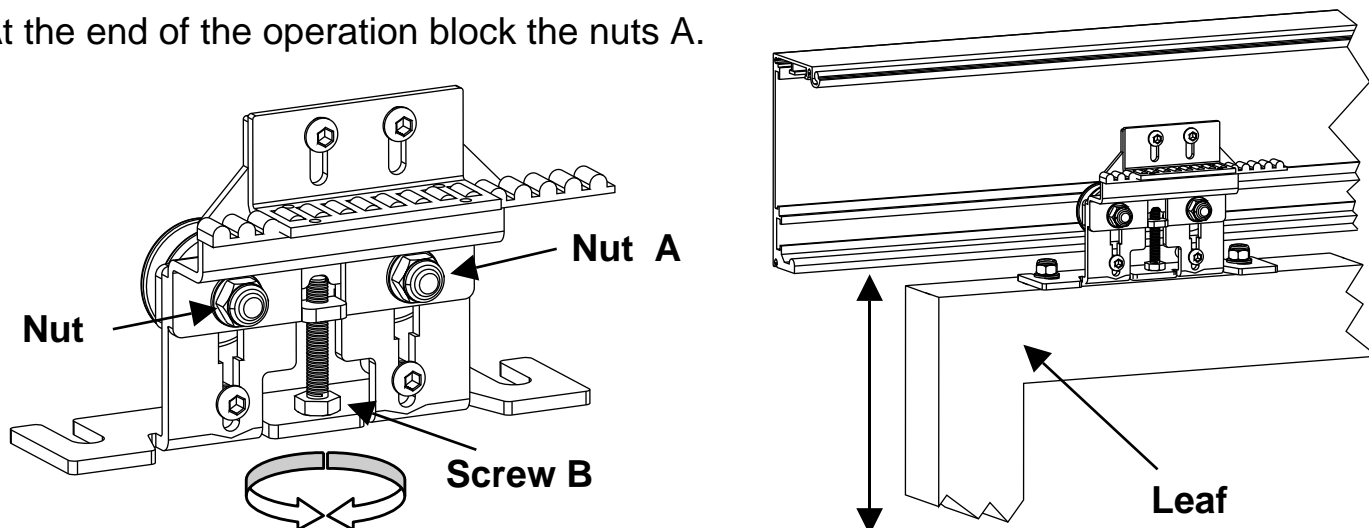


We recommend to insert inside the top profile of the leaf a drawn in iron of a suitable size, then drill and 8/10mm thread. Insert the threaded inserts and fix the carts.

LEAVES HEIGHT ADJUSTMENT

To adjust the height of the leaves loosen the two nuts A and through the screw B make the adjustments : screwing the leaf goes up, unscrewing the leaf goes down.

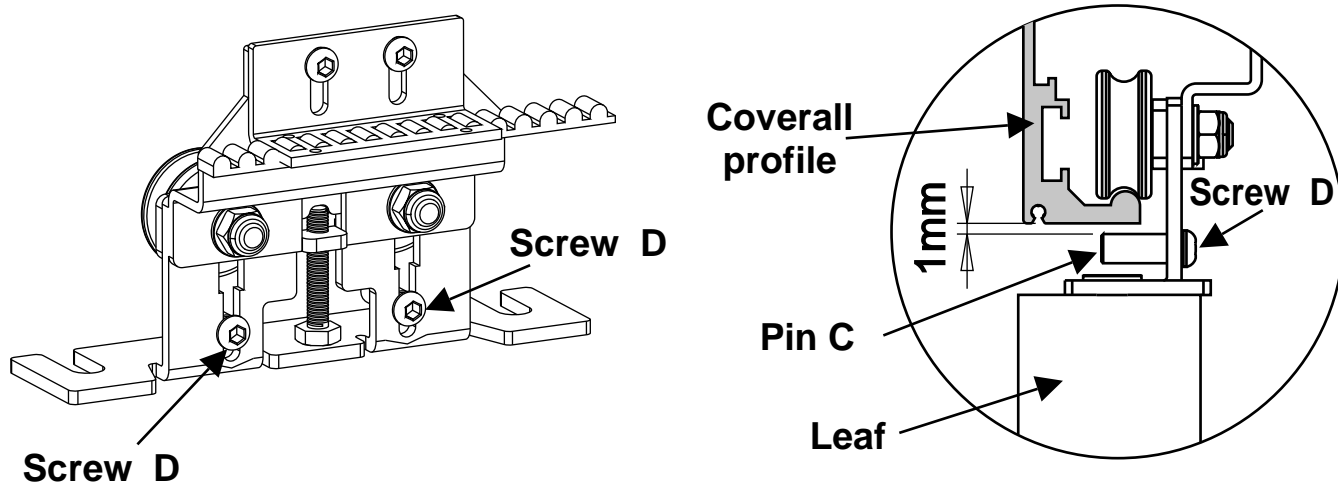
At the end of the operation block the nuts A.



ANTI-DERAILMENT SETTINGS

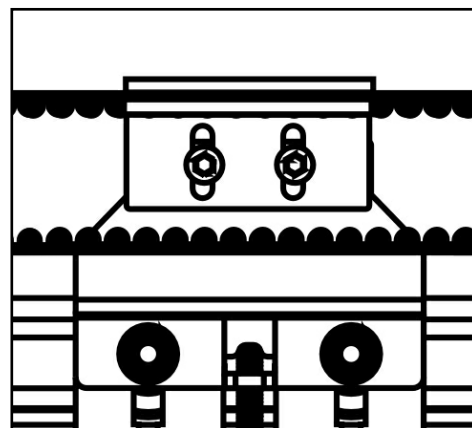
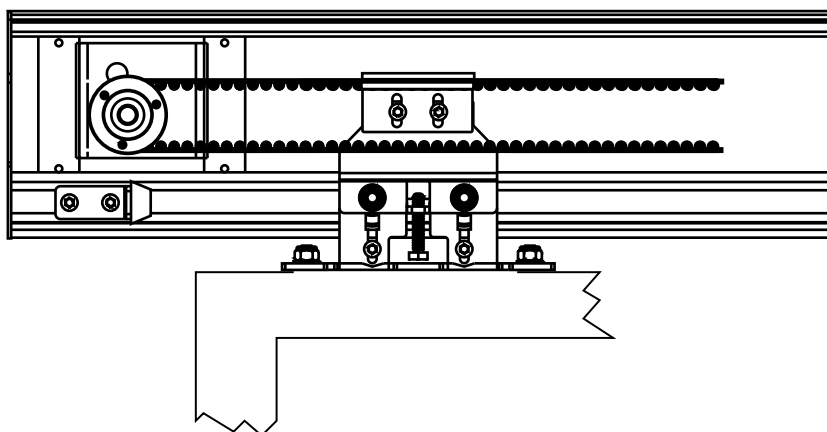
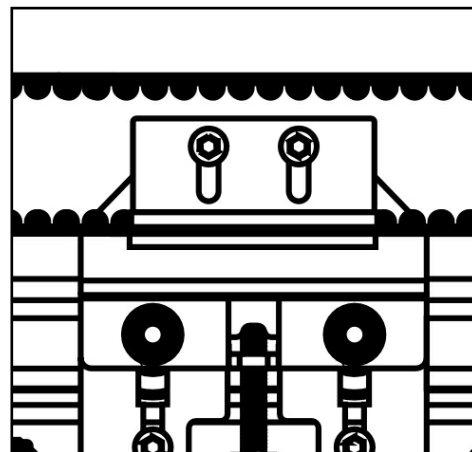
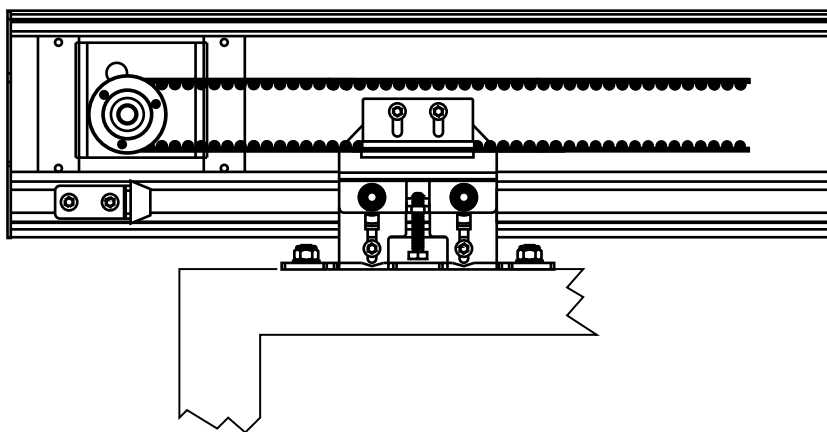
Adjust the pins **C** to avoid the derailment of the trolleys.

Loosen the screw **D** and adjust the pins at a distance of about 1mm from the bottom of the profile of the coverall.



RIGHT - LEFT CONFIGURATION

To reverse the direction of travel in case of single leaf, reverse the belt connection as in the drawing.

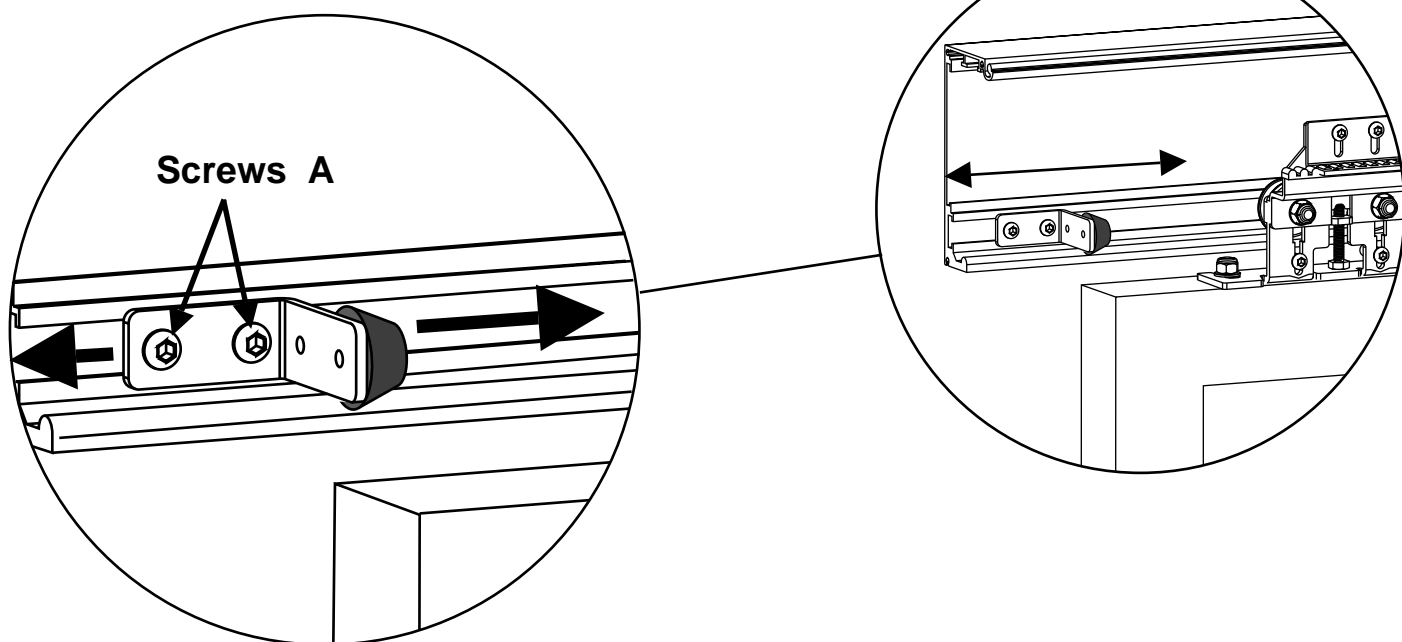


LIMIT SWITCH ADJUSTMENT

Adjust the limit switches to determine the stroke of the door.

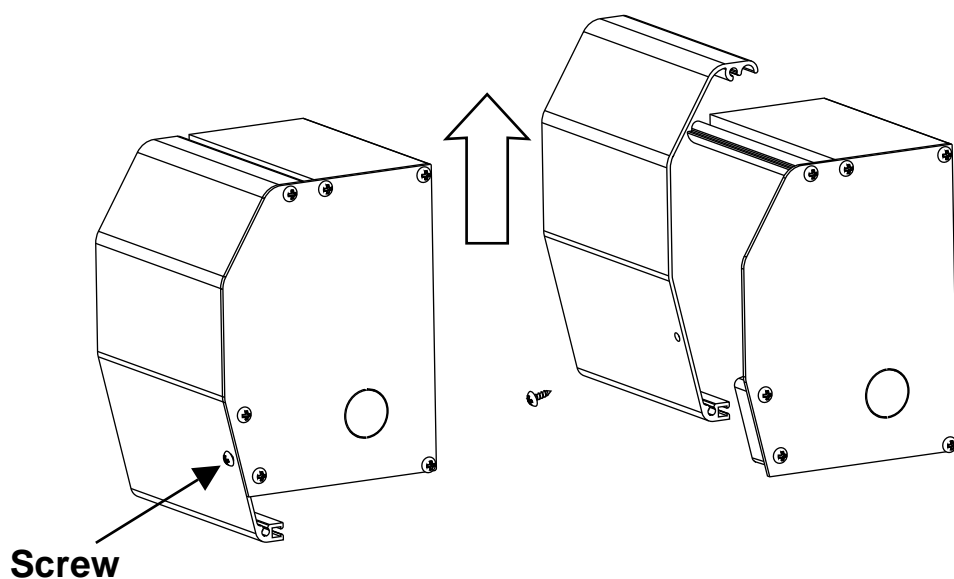
Y Loosen the screws **A** and adjust to the desired stroke.

Y Tighten the two screws

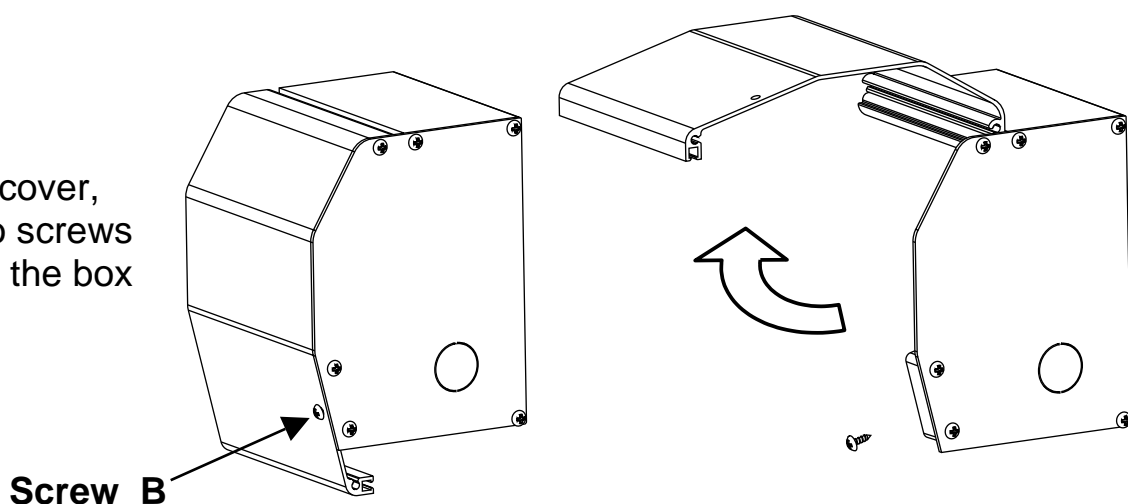


COVER REMOVAL

To remove the front cover, unscrew the two screws **B** at the ends of the box and lift



To lift the front cover, unscrew the two screws **B** at the ends of the box and rotate

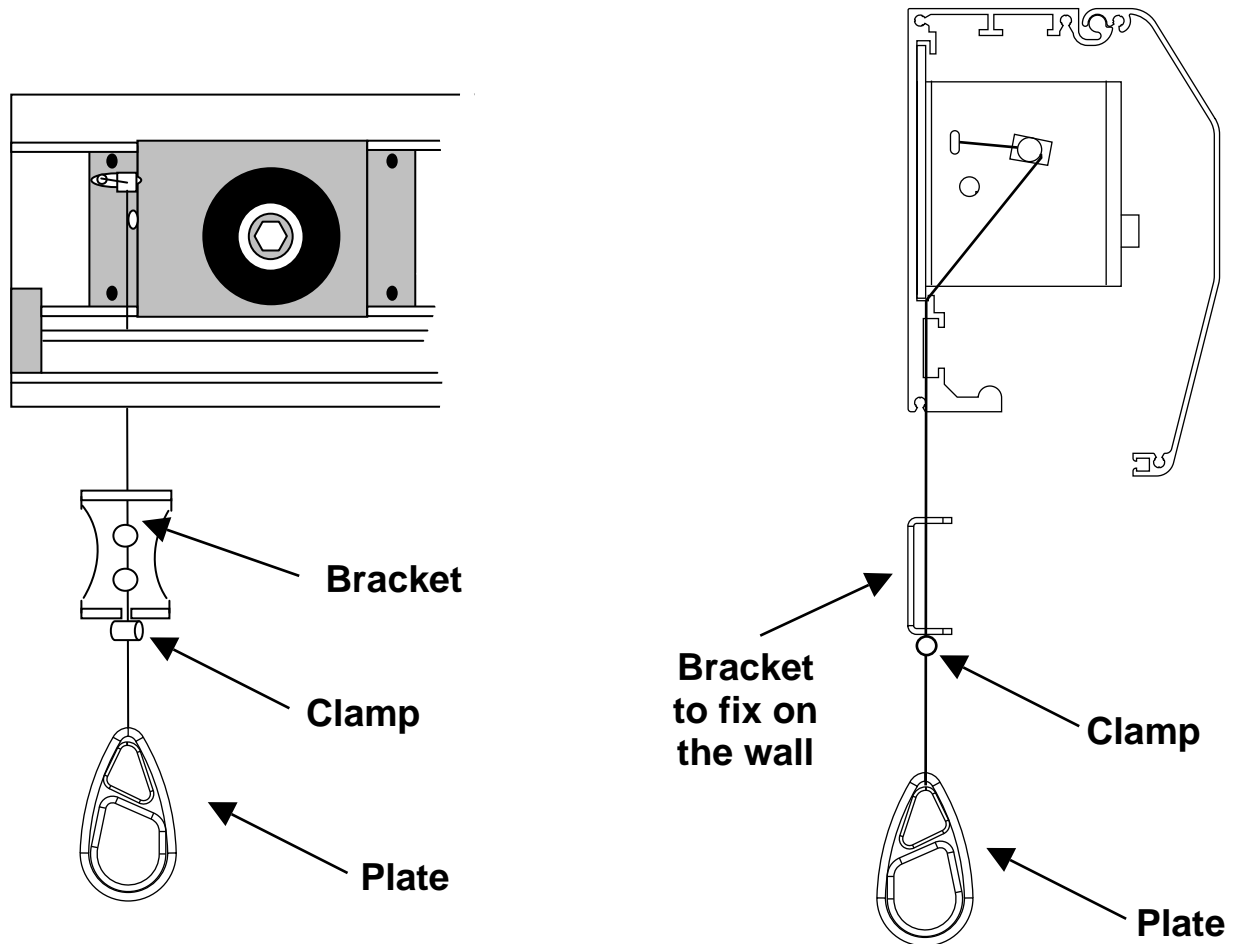


ELECTRO LOCK WITH MANUAL RELEASE (optional)

Speed electric lock is the surest way to lock the leaves.

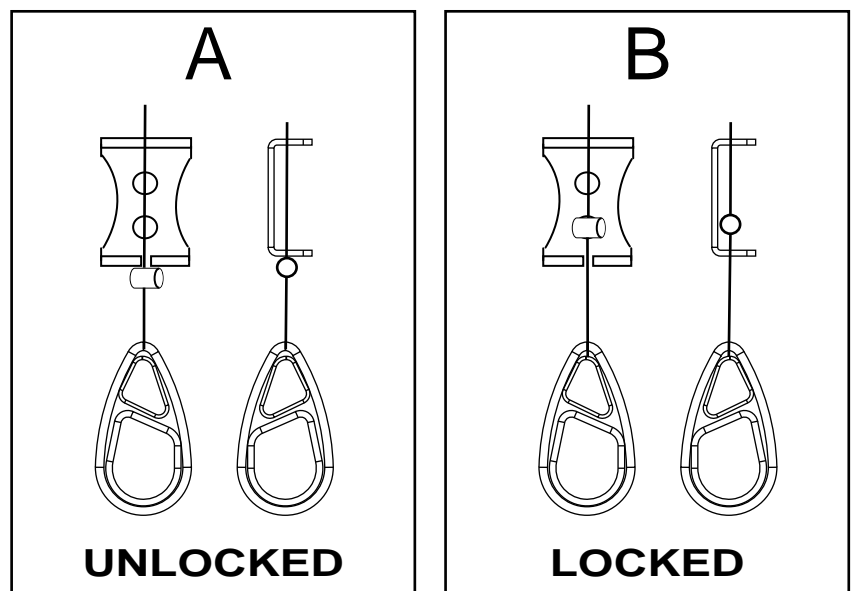
Preferably associated to the the backup battery, it is provided with external manual release in case of need.

WARNING! To unlock pull in moderation.



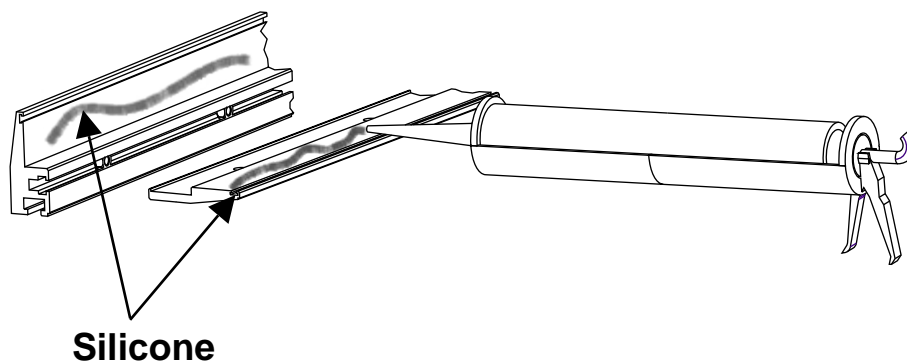
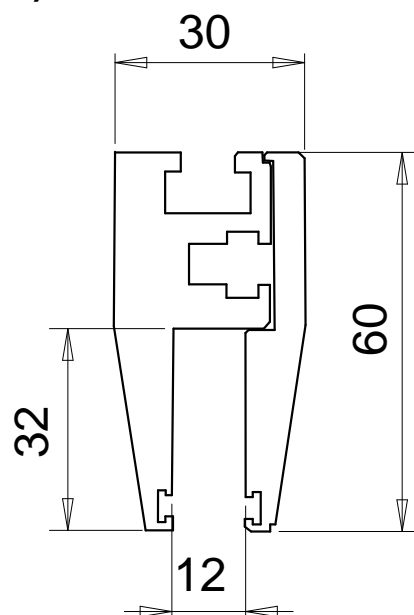
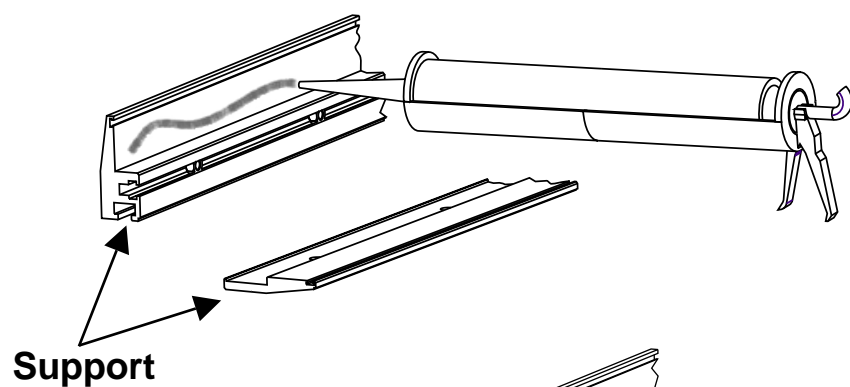
A. To do the manual release pull the plate and clip the terminal..

B. To block reposition the terminal inside

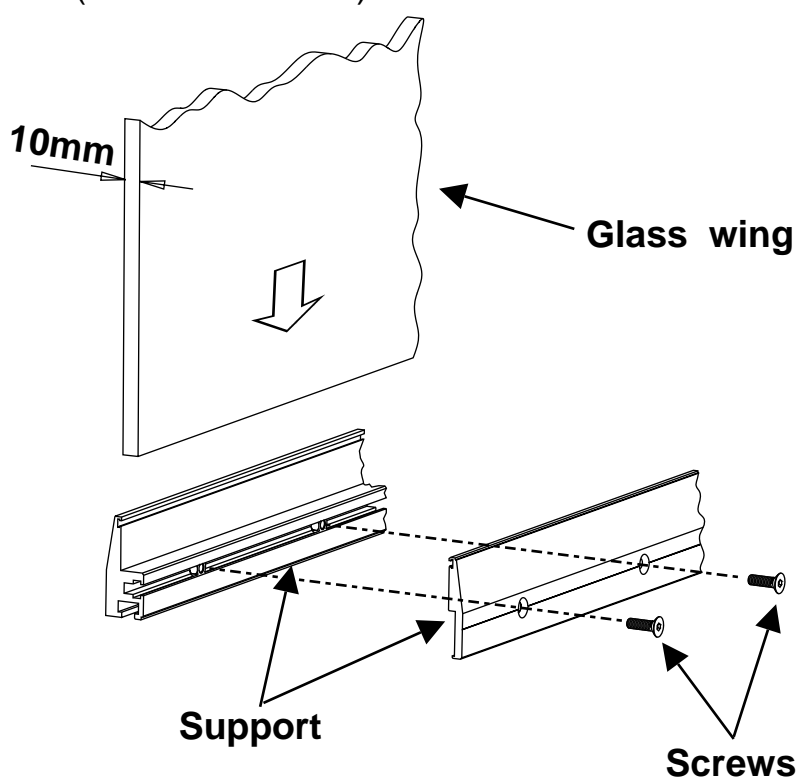


SUPPORT FOR 10mm thick GLASS WINGS (Optional)

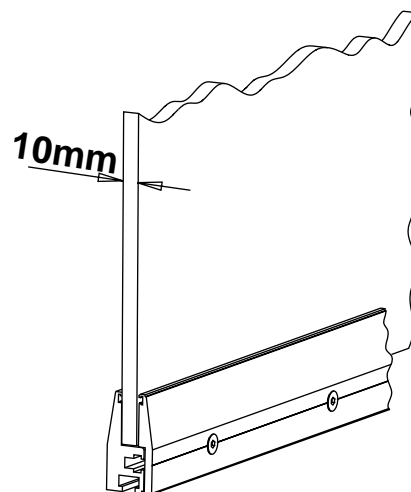
Apply silicone on the aluminum support.



Insert the glass wing
(thickness 10mm)



Block the support with the
screws and wait at least 48
hours for drying



NOTE

SAFETY PRECAUTIONS

These warnings are an essential, integral part of the product and must be given to the user. They provide important indications on the installation, use and maintenance and must be read carefully. This form must be preserved and passed on to subsequent users of the system. The incorrect installation or improper use of the product may be dangerous.

INSTALLATION INSTRUCTIONS

- The installation must be performed by professionally skilled personnel and in compliance with current local, state, national and European legislation.
- Before beginning the installation, check the integrity of the product.
- The laying of cables, electrical connections and adjustments must be workmanlike performed.
- The packing materials (cardboard, plastic, polystyrene, etc.) are a potential hazard and should be disposed of correctly and not left within reach of children.
- Do not install the product in potentially explosive environments or environments disturbed by electromagnetic fields. The presence of inflammable gases or fumes is a grave danger to safety.
- Set up a safety device for overvoltage, a disconnecting and/or differential switch suitable for the product and conforming to current standards.
- The manufacturer declines any and all responsibility for product integrity, safety and operation in the event incompatible devices and/or components are installed.
- Solely original spare parts should be used for repairs and replacements.
- The installer must provide all the information relating to the operation, maintenance and use of the individual parts, components and system as a whole.

WARNINGS FOR THE USER

- Read the instructions and enclosed documentation carefully.
- The product must be used for the express purpose for which it was designed. Any other use is considered improper and therefore hazardous. In addition, the information given in this document and in the enclosed documentation may be subject to modifications without prior notice. It is given as an indication only for product application. The company declines any responsibility for the above.
- Keep products, devices, documentation and anything else provided out of reach of children. In the event of maintenance, cleaning, breakdown or faulty operation of the product, cut off the power and do not attempt to operate on the product. Contact solely the professionally skilled personnel responsible for these operations. Failure to adhere to the above indications may be dangerous.

All products are guaranteed for 2 years, as per the date on the invoice or on the receipt.

The warranty also does not include: failures or damages caused by faults of the electrical system and/or carelessness, negligence or inadequacy of the installation to the use for which it is intended and in any case from abnormal use; failures or damages due to tampering by unauthorized personnel or the use of components not attributable to the manufacturer and/or non-original spare parts; defects caused by chemical agents, external bodies or atmospheric and/or natural phenomena in general; failures or damages caused by incorrect installation of the Products according to the rule of art, safety and conformity of use expressly indicated in the technical documentation of the same Products; the consumables; interventions for checks and assessments of any flaws or defects then not found; compensations for the period of inactivity of the system where the Products are installed.

**The data and images are for guidance only
VDS reserves the right to change at any time characteristics of the products described in
its sole discretion, without notice.**



Via Circolare p.i.p. N° 10

65010 Santa Teresa di Spoltore (PE) - ITALY

Tel. +39 085 4971946 - FAX +39 085 4973849

www.vdsautomation.com - info@vdsautomation.com

